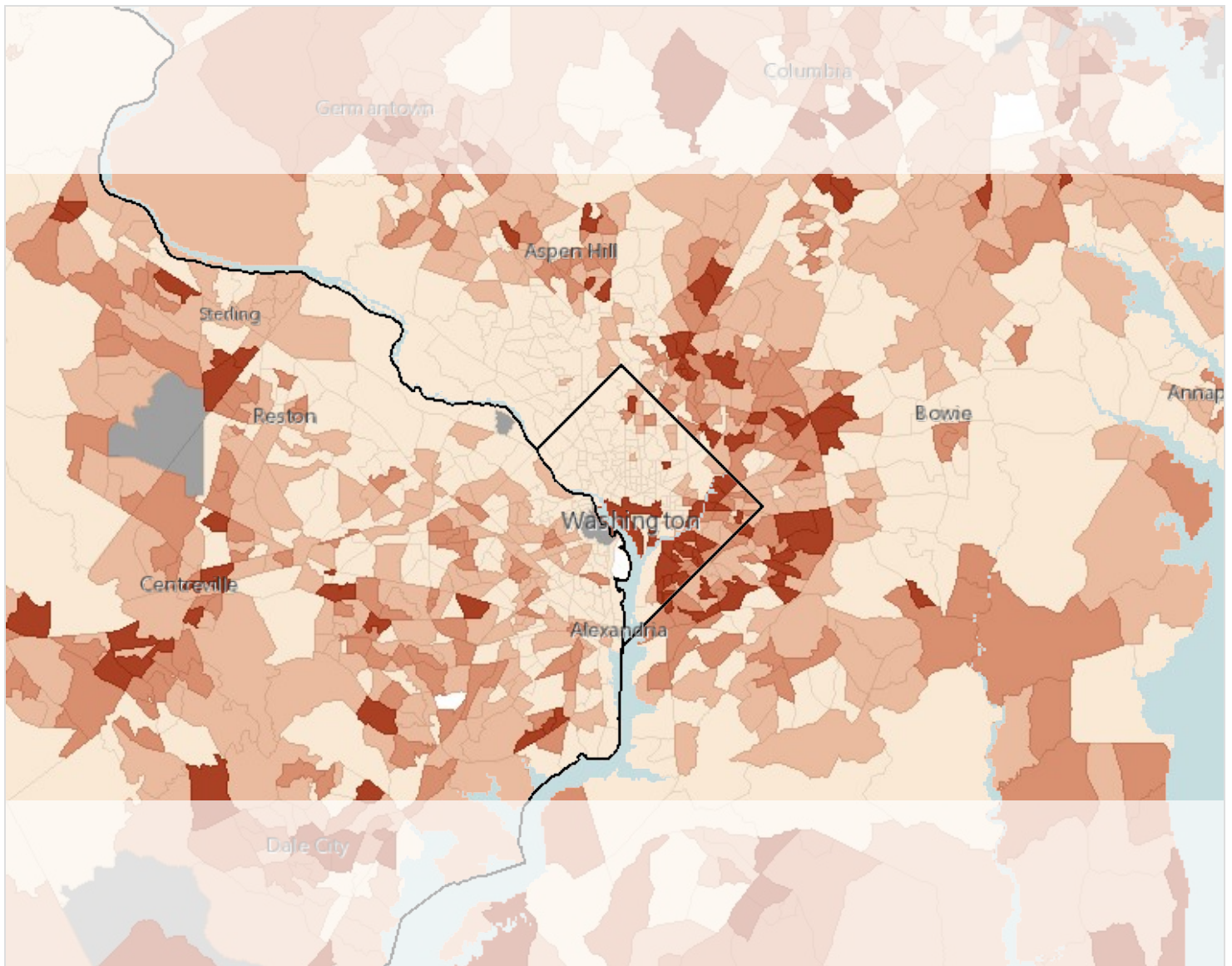


# Vulnerable Populations Footprint Demographic Report



## Map Legend

Enrollment in All Public Schools, Percent by Tract, ACS 2015-19

- Over 92.0%
- 86.1 - 92.0%
- 78.1 - 86.0%
- Under 78.1%
- No Student Population Reported
- No Data or Data Suppressed
- Vulnerable Populations Footprint, ACS 2016-20

## Footprint Definition

- Population Below Poverty Level  $\geq$  20%
- Population Less Than High School  $\geq$  25%

## Data Sources

- American Community Survey: 2016-20
- American Community Survey: 2015-19

## Basic Demographics in the Shaded Footprint Area

Total Population	53,702
Total Area in Square Miles	3.63
Persons Per Square Mile	14,804

Population by Race/Ethnicity	Total	Percent
Non-Hispanic White	5,090	9.48
Black or African American	13,408	24.97
Asian	1,228	2.29
Native American / Alaska Native	47	0.09
Native Hawaiian / Pacific Islander	0	0
Some Other Race	785	1.46
Multiple Race	688	1.28
Hispanic or Latino	32,456	60.44

Population by Gender	Total	Percent
Male	29,391	54.73
Female	24,311	45.27

Population by Age Groups	Total	Percent
Age 0 to 17	16,367	30.48
Age 18 to 64	33,904	63.13
Age 65 and Up	3,431	6.39

Source: U.S. Census Bureau, 2016-2020 American Community Survey 5-Year Estimates.

## Vulnerable Populations in the Shaded Footprint Area

<b>Below 100% of Federal Poverty Level</b>	<b>Total</b>	<b>Percent*</b>
Total Population in Poverty	14,385	28.53
Children Age 0-17 in Poverty	5,890	37.41

<b>Below 200% of Federal Poverty Level</b>	<b>Total</b>	<b>Percent*</b>
Total Population in Poverty	26,898	53.36
Children Age 0-17 in Poverty	10,985	69.77

<b>Educational Attainment</b>	<b>Total</b>	<b>Percent**</b>
Population with No High School Diploma	14,174	43.75

<b>Linguistic Isolation</b>	<b>Total</b>	<b>Percent</b>
Linguistically Isolated Population	16,455	34.74

Source: U.S. Census Bureau, 2016-2020 American Community Survey 5-Year Estimates.

\* Percentage of the population for whom poverty has been determined.

\*\* Percentage of the population age 25 and over.

---

<https://sparkmap.org>, 11/23/2022